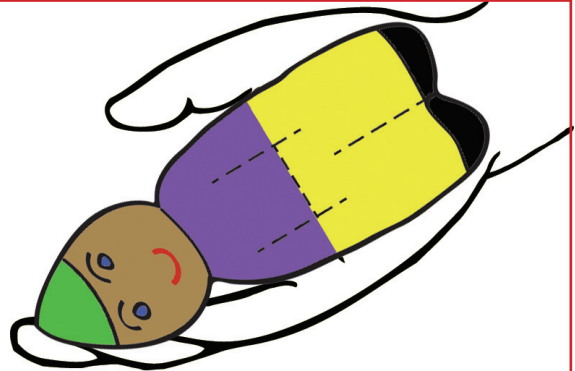


Guidelines for the making of the doll

Your handiwork is a precious gift to a child. The love and care that you take when you make a doll sends the message that the child who receives it, is special.

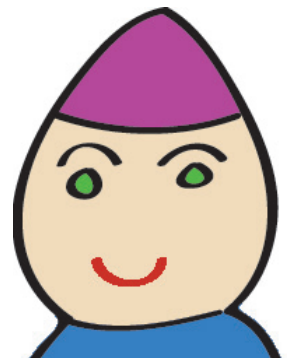
Size

It is preferable that the size of the doll is more or less the same as the length of an adult hand.



The face of the doll is very important.

- A mouth and two little eyes are all that is needed on the face. The mouth must preferably be red and stitched (not drawn), and shaped in a definite smile. The eyes can be blue, green, brown or black and should not be too big. (Should you wish to add eyebrows, make sure they are thin in arched so that the doll doesn't appear angry.)
- The colour of the face can be off-white, light brown or dark brown.



Accessories are welcome

- You are welcome to use accessories to beautify the doll, but it is NOT AT ALL necessary.
- Make sure the accessories are firmly attached, by either glueing or sewing them onto the doll.
- Avoid red that could look like blood (some of the children in high-risk areas can easily associate a red button, for example, with a blood stain).

THANK YOU that you are using the creativity that you received from the Lord, to further His Kingdom!

